

GN 441 | Plugs

Aluminium

GN 442 | Plugs

for high temperatures, aluminium

METRIC

BSP



+212 °F
-22 °F

METRIC

BSP



+356 °F
-22 °F

- 1
- 2
- 3
- 4
- 5
- 6
- 7
- 8
- 9
- 10
- 11
- 12
- 13
- 14
- 15
- 16
- 17
- 18

MATERIAL
Aluminium.

PACKING RING
NBR synthetic rubber.

STANDARD EXECUTIONS
- **GN 441-SW:** epoxy resin coating, RAL 9005 black colour, matte finish.
- **GN 441-BL:** natural aluminium.

MAXIMUM CONTINUOUS WORKING TEMPERATURE
100°C.

SPECIAL EXECUTIONS ON REQUEST
Side breather hole.

MATERIAL
Aluminium.

PACKING RING
FKM type VITON®*.

STANDARD EXECUTIONS
- **GN 442-SW:** epoxy resin coating, RAL 9005 black colour, matte finish.
- **GN 442-BL:** natural aluminium.

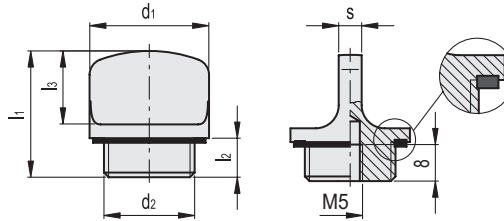
MAXIMUM CONTINUOUS WORKING TEMPERATURE
180°C.

FEATURES
GN 442 plugs are provided with a threaded blind hole for assembling a dipstick.

SPECIAL EXECUTIONS ON REQUEST
Side breather hole.

* Registered trademark by DuPont Dow Elastomers.

Conversion Table	
1 mm = 0,039 inch	
d1	
mm	inch
22	0.87
26	1.02
32	1.26
40	1.57



GN 441-SW

METRIC

METRIC

Code	Description	d1	d2	l1±0.5	l2	l3	s	△
GN.22403	GN 441-22-M16x1.5-1-SW	22	M16x1.5	26	8	15	5	12
GN.22413	GN 441-26-M20x1.5-1-SW	26	M20x1.5	27.5	8.5	16	5	17
GN.22423	GN 441-32-M26x1.5-1-SW	32	M26x1.5	29	9	17	6	27

GN 442-SW

METRIC

METRIC

Code	Description	d1	d2	l1±0.5	l2	l3	s	△
GN.22453	GN 442-22-M16x1.5-1-SW	22	M16x1.5	26	8	15	5	12
GN.22463	GN 442-26-M20x1.5-1-SW	26	M20x1.5	27.5	8.5	16	5	17
GN.22473	GN 442-32-M26x1.5-1-SW	32	M26x1.5	29	9	17	6	27

METRIC

METRIC

Code	Description	d1	d2	l1±0.5	l2	l3	s	△
GN.22407	GN 441-22-G3/8-1-SW	22	G 3/8	26	8	15	5	12
GN.22417	GN 441-26-G1/2-1-SW	26	G 1/2	27.5	8.5	16	5	17
GN.22427	GN 441-32-G3/4-1-SW	32	G 3/4	29	9	17	6	27
GN.22437	GN 441-40-G1-1-SW	40	G 1	32.5	11	18	7	48

METRIC

METRIC

Code	Description	d1	d2	l1±0.5	l2	l3	s	△
GN.22457	GN 442-22-G3/8-1-SW	22	G 3/8	26	8	15	5	12
GN.22467	GN 442-26-G1/2-1-SW	26	G 1/2	27.5	8.5	16	5	17
GN.22477	GN 442-32-G3/4-1-SW	32	G 3/4	29	9	17	6	27
GN.22487	GN 442-40-G1-1-SW	40	G 1	32.5	11	18	7	48

GN 441-BL

METRIC

METRIC

Code	Description	d1	d2	l1±0.5	l2	l3	s	△
GN.22401	GN 441-22-M16x1.5-1-BL	22	M16x1.5	26	8	15	5	12
GN.22411	GN 441-26-M20x1.5-1-BL	26	M20x1.5	27.5	8.5	16	5	17
GN.22421	GN 441-32-M26x1.5-1-BL	32	M26x1.5	29	9	17	6	27

GN 442-BL

METRIC

METRIC

Code	Description	d1	d2	l1±0.5	l2	l3	s	△
GN.22451	GN 442-22-M16x1.5-1-BL	22	M16x1.5	26	8	15	5	12
GN.22461	GN 442-26-M20x1.5-1-BL	26	M20x1.5	27.5	8.5	16	5	17
GN.22471	GN 442-32-M26x1.5-1-BL	32	M26x1.5	29	9	17	6	27

METRIC

METRIC

Code	Description	d1	d2	l1±0.5	l2	l3	s	△
GN.22405	GN 441-22-G3/8-1-BL	22	G 3/8	26	8	15	5	12
GN.22415	GN 441-26-G1/2-1-BL	26	G 1/2	27.5	8.5	16	5	17
GN.22425	GN 441-32-G3/4-1-BL	32	G 3/4	29	9	17	6	27
GN.22435	GN 441-40-G1-1-BL	40	G 1	32.5	11	18	7	48

METRIC

METRIC

Code	Description	d1	d2	l1±0.5	l2	l3	s	△
GN.22455	GN 442-22-G3/8-1-BL	22	G 3/8	26	8	15	5	12
GN.22465	GN 442-26-G1/2-1-BL	26	G 1/2	27.5	8.5	16	5	17
GN.22475	GN 442-32-G3/4-1-BL	32	G 3/4	29	9	17	6	27
GN.22485	GN 442-40-G1-1-BL	40	G 1	32.5	11	18	7	48